

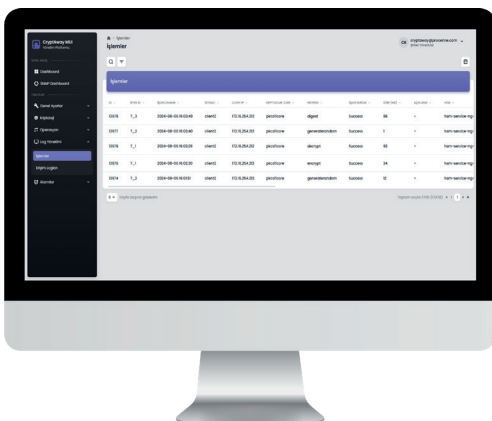
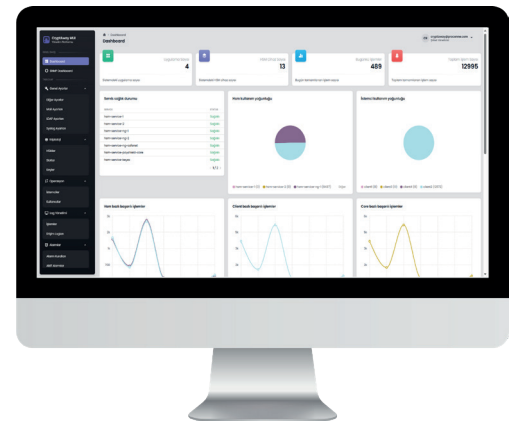
The Quick and Easy Way to Manage Security

What is CryptAway?

CryptAway is a software-based system that allows you to create, manage and use a brand and model independent Hardware Security Module (HSM) cluster at maximum efficiency with its unique perspective. In addition, it offers many side features such as tolerating HSM-related errors, load balancing, healthcheck control, alarm and log management. It also saves you from low-level and difficult-to-understand flows such as PKCS11 and allows you to operate with high-level Http (Rest) / TCP / UDP APIs.

CryptAway Features

- Thanks to unique integration methods and simple-functional user interface (UI), both operational loads and software development loads are minimized, HSM, slot, key management and cryptological operations are easily performed on high level APIs.
- In cases requiring high-performance use, it ensures that all HSM devices in the HSM pool operate with the highest possible performance without creating a bottleneck.



- Thanks to load balancing and fault tolerance, the field is not affected by HSM-related problems. Thanks to the 3-level healthcheck mechanism and alarm management, you are informed very quickly about HSM errors.
- In addition to CryptAway's detailed logging features within the scope of central management, event/alarm management and notifications are also performed

- With its innovative design perspective, CryptAway provides ease of use for system-network and security event monitoring teams in the use of dashboards. It also offers advanced reporting features. In addition, there is an additional SNMP dashboard where you can monitor the real-time status of your HSM cluster.
- Thanks to the smart management infrastructure, HSM, slot and key management/authorization can be done easily. In addition, settings and restrictions such as TPS, Logging, Load Balancing - specific to your application teams - can be done in an isolated manner.
- Based on the role-based separation of duties principle, flexible authorizations can be provided for both the operation teams that will manage the UI and the software teams that can send requests to the HSMs. In addition, the detailed history of each transaction made on UI and gateway is saved.

